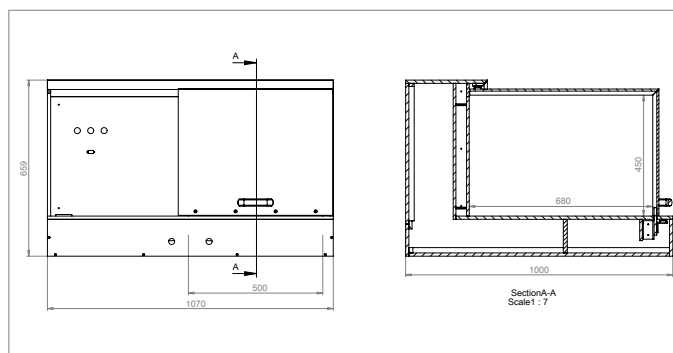
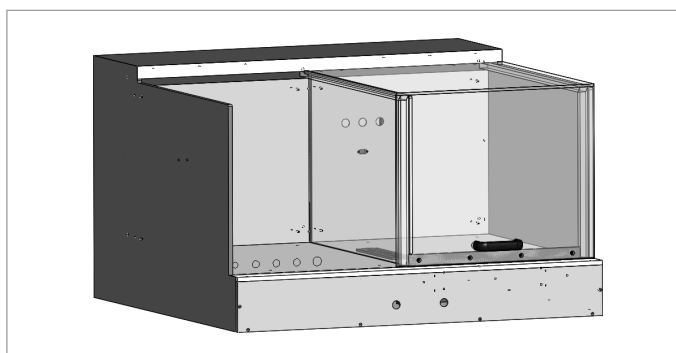


# DATA SHEET

## Accessories: Tandem test hood TK 7000A



Tandem test hood TK 7000A

<b>Description</b>	<p>For test station installations in which a necessary protection against contact is required, test hoods are especially well suited. Through the test hood the DUT cannot be touched during the generation of dangerous voltages. Once the test hood is opened there is a forced switch-off of the dangerous voltage.</p> <p>Tandem test hoods are particularly suitable for the testing of large numbers. There are two equal areas of testing available. While it is tested in on test area, the other one can be loaded or unloaded at the same time. In a similar test and handling time an optimum utilization of human and machine is the result.</p>	
<b>TK 7000A</b>	<ul style="list-style-type: none"> <li>• Housing made of PVC (colour: RAL 7011)</li> <li>• Movable acrylic glass hood</li> <li>• Positively driven safety switch for each test station</li> <li>• External dimensions (HxWxD): 659 x 1,070 x 1,000 mm (25.9 x 42.1 x 39.4 in.)</li> <li>• Internal dimensions (HxWxD): 450 x 500 x 680 mm (17.7 x 19.7 x 26.8 in.)</li> </ul>	
<b>Variants</b>	Simple test hoods	For simple tests of small quantities test hoods with swivelling acrylic glass hoods are offered. These are available with or without device compartment to integrate a test device. In addition, depending on the application, different connection sets are available.
	Test cage with trapdoor	Test cages with trapdoor are mainly used when ergonomically a high number of DUT with a high weight is to be tested. The trapdoor is pneumatically moved, therefore the operator merely has to press a button, not move any mechanics.
	Test cage with light curtain	Instead of an acrylic glass hood also a safety light curtain can be used. This version meets the same requirements is, however, more convenient in handling because the test personnel does not need to operate the hood by hand. This is especially important with high quantities.

### Versions

Design types	Specialty	Max. dimensions of DUT (HxWxD) in mm (in.)	Type
Simple test hood	Device compartment 19" / 5 HU	180 x 410 x 350 (7.1 x 16.1 x 13.8)	HB 2100A
Simple test hood	Swivel hood	200 x 500 x 350 (7.9 x 19.7 x 13.8)	HB 3400A
Extra wide test hood	Device compartment 19" / 5 HU	350 x 580 x 700 (13.8 x 22.8 x 27.6)	HB 5000A
Extra wide test hood	Double width, device compartment 2 x 19" / 5 HU	300 x 700 x 400 (11.8 x 27.6 x 15.7)	HB 6000A
Extra wide test hood	Double width, device compartment 2 x 19" / 5 HU	300 x 1,200 x 400 (11.8 x 47.2 x 15.7)	HB 7000A
Tandem test hood	Sliding hood, device compartment 2 x 19" / 3 HU	400 x 568 x 580 (15.7 x 22.4 x 22.8)	TK 6000A
Tandem test hood	Sliding hood	450 x 500 x 680 (17.7 x 19.7 x 26.8)	TK 7000A
Test cage with trapdoor	Trapdoor	755 x 800 x 640 (29.7 x 31.5 x 25.2)	FK 1000A
Test cage with light curtain	Light curtain on one side	790 x 640 x 660 (31.1 x 25.2 x 26.0)	PK 2000A
Test cage with light curtain	Double width, displaced foot space	940 x 1,890 x 975 (37.0 x 74.4 x 38.4)	PK 6000A
Test cage with light curtain	Device compartment 19" / 16 HU, displaced foot space	945 x 1,010 x 800 (37.2 x 39.8 x 31.5)	PK 7000A